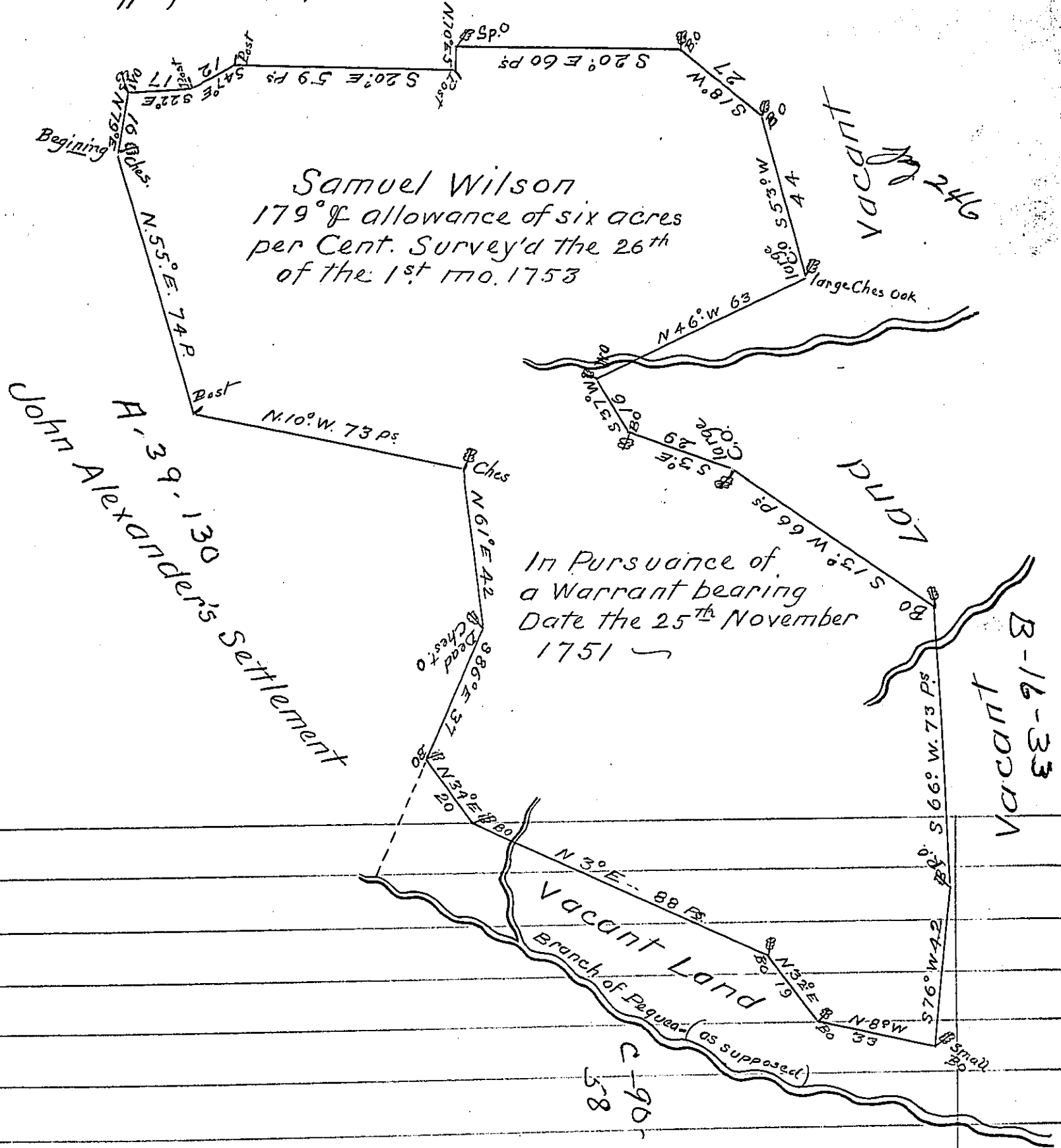


Land settled by Samuel Campbell



The Tract of Land described by  
 this Draught is situate in or near a Place called  
 Mount Nebo in Martick Township Lancaster  
 County Certify'd  
 P. Geo. Churchman

IN TESTIMONY that the above is a copy of the original remaining on file in  
 the Department of Internal Affairs of Pennsylvania, made  
 conformably to an Act of Assembly approved the 16th day of  
 February, 1833, I have hereunto set my Hand and caused  
 the Seal of said Department to be affixed at Harrisburg,  
 this Twenty third day of May 1904.

*Francis P. Brown*  
 Secretary of Internal Affairs.